



PULLMAN MELBOURNE ALBERT PARK

Offering business and leisure travellers a lavish space to meet, rejuvenate and explore the city of Melbourne.

THE PLACE TO MEET

Pullman Melbourne Albert Park is ideal for leisure, business, conference and special event guests, blending modern comforts with high-end technology.

Centrally located on Queens Road, the hotel overlooks the picturesque Albert Park Lake and is minutes from St Kilda Road, Chapel Street & St Kilda precinct. It is a short distance from Melbourne's central business district and attractions including Queen Victoria Market, Federation Square, and Melbourne's sporting and arts precincts.

Whatever your needs may be, Pullman Melbourne Albert Park is committed to succeed in providing a memorable experience.

CONTEMPORARY DINING

Windows Restaurant

Set within contemporary and spacious surroundings overlooking beautiful Albert Park Lake, offering an extensive menu of modern Australian cuisine.

Espresso Bar

Enjoy comfortable and stylish surroundings with a fine selection of specialty teas, espresso coffees, gourmet sandwiches, salads, bakery items and sweet treats to choose from.

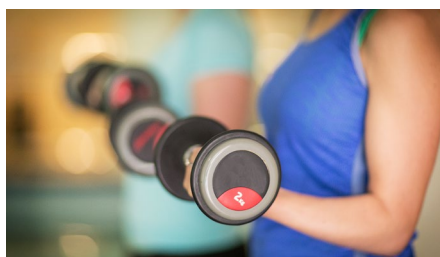
Atrium Bar + Lounge

A casual space to relax and meet friends or colleagues, the extensive sharing menu complements the bars local and international beverage offering.

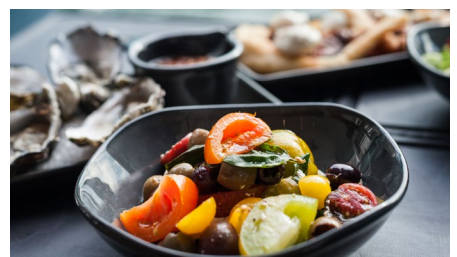
THE BEST OF THE HOTEL



Comfortable surroundings - Pullman Executive Lounge



Health & well-being - Fit Lounge



Inspired dining - Windows Restaurant

ELEGANT, COMFORTABLE ROOMS

Pullman Guest Room Facilities

- 30 sqm vibrant and contemporary room
- Innovative Pullman featherbed
- 40 inch LCD TV with multi media connectivity panel
- WiFi internet
- Nespresso coffee machine (Executive Rooms & Suites)
- Deluxe mini bar
- Stylish walk in rain shower
- CO Bigelow bathroom amenities and in-room safe
- Daily housekeeping and valet laundry services



HIGH LEVEL MEETING SPACES

The hotel's Conference & Event Centre is one of Melbourne's largest and most comprehensive venues.

Co-Meeting by Pullman provides an innovative approach to the delivery of each and every event at Pullman Melbourne Albert Park.

Choose from 31 versatile spaces spanning over 2,600 square metres of floor space with capacity for up to 1600 guests. The pillarless Grand Ballroom boasts 6.2m ceilings and the flexibility of retractable walls. Floor to ceiling windows offer picturesque views over Albert Park Lake.



RELAX IN THE FIT LOUNGE

With a healthy, modern and efficient atmosphere, the Fit Lounge brings guests a daily interlude of well-being through a range of cardiovascular and training machines. The space also offers a heated swimming pool, spa and sauna for relaxation.

Discover optional outdoor activities in the surrounds of Pullman Melbourne Albert Park.



VENUE	AREA(SQ.M)	CEILING HEIGHT(M)	THEATRE	CLASS ROOM	U-SHAPE	BANQUET	COCKTAIL	CABARET
Grand Ballroom	1070	6.2	1400	540	-	900	1400	616
Grand Ballroom & 7	1462	6.2	1400	540	-	1404	1600	776
State	395	3.6	528	198	-	312	500	272
Lake	187	3.1	204	90	-	129	180	112
Boardroom	31	2.6	-	-	-	12	-	-
Park	122	3.1	72	25	27	60	80	40
M:1 - M:10	22	3.1	15	-	-	10	15	-
Victoria	42	2.7	45	24	15	-	45	20
Albert	81	2.7	72	39	-	50	75	30
Element	177	3.3	100	36	30	80	150	64

ACCESS TO THE HOTEL

PULLMAN MELBOURNE ALBERT PARK
65 Queens Road, Melbourne 3004, Australia
T. +61 3 9529 4300 F. +61 3 9521 3111
E. H8788@accor.com W. www.pullmanalbertpark.com.au

BY PLANE: Melbourne International (MEL) 40 minutes by taxi (29 kms)
BY PRIVATE TRANSPORT: further information provided by Hotel Concierge
BY TRAM: a number of tram services arrive from Melbourne central business district to stop #27 (4.5 kms)